



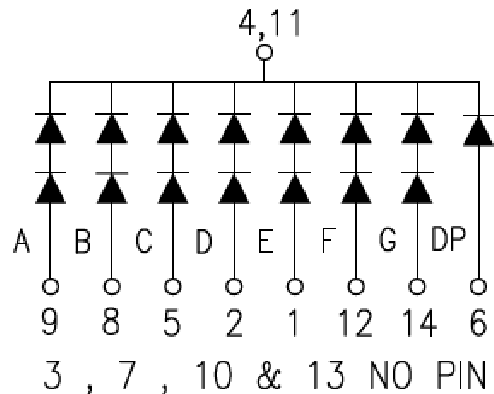
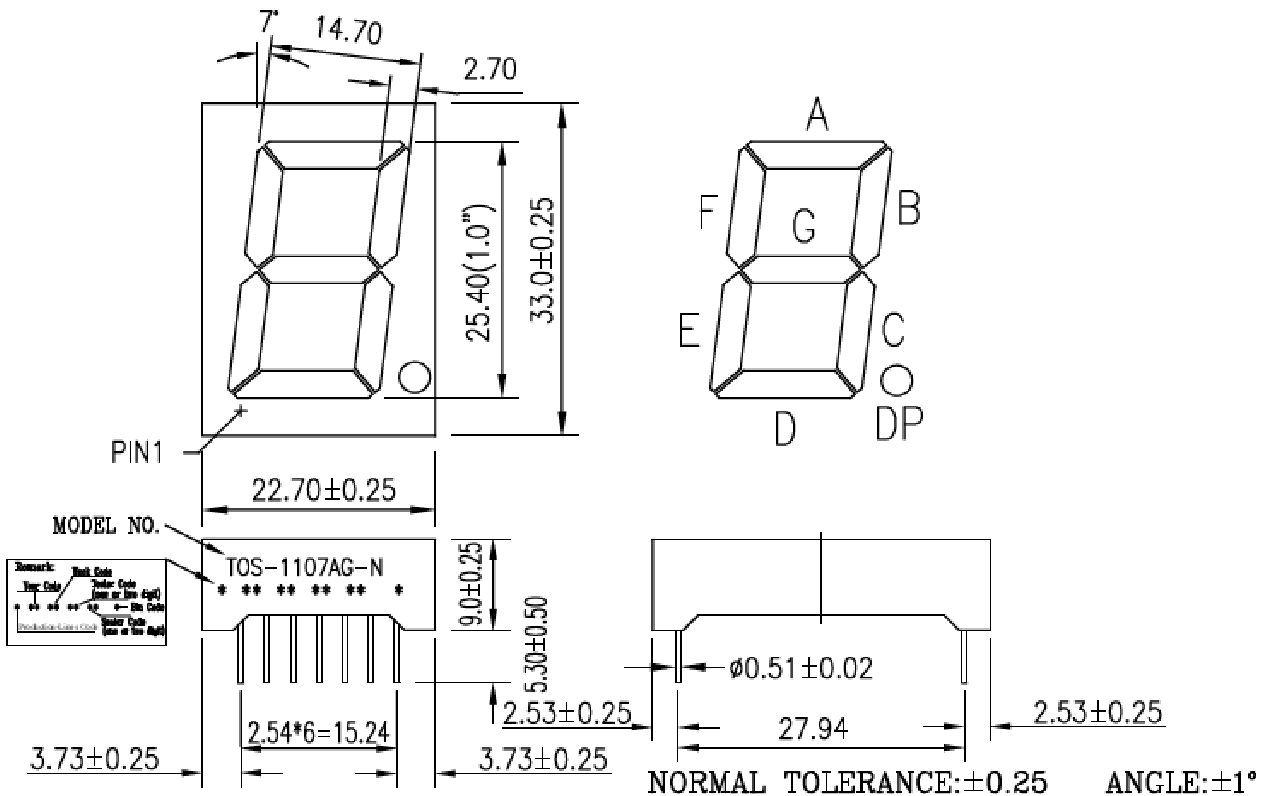
KASHINOKI SOGYO CO., LTD

製品名

文字高25.4mm緑セグメント1107Gカソードコモン

APPEARANCE			TECHNOLOGY	GaP
FACE	SEGMENT	PIN	SOURCE COLOR	Green
Gray	White	φ0.51x10.28	DRIVER MODE	Com. Cathode
			PACKING	"F" Plastic Box

PACKAGE DIMENSIONS





KASHINOKI SOGYO CO., LTD

製品名

文字高25.4mm緑セグメント1107Gカソードコモン

ABSOLUTE MAXIMUM RATINGS AT TA=25°C

PARAMETER	VALUE	UNITS
Power Dissipation Per Segment (Except Dp)	120	mW
Peak Forward Current Per Segment (1/10 Duty Cycle, 0.1ms Pulse Width)	80	mA
Continuous Forward Current Per Segment	20	mA
Recommend Operating Current	12	mA
Reverse Voltage Per Segment (Except Dp)	10	V
Operating Temperature Range	-25 to +85	°C
Storage Temperature Range	-30 to +85	°C
Junction Temperature	+85	°C
Storage Time at 25±2°C / 65%RH±5%RH	6	Month
Lead Solder Temperature(1/16 Inch Below Seating Plane)	260°C for 3 sec.	

ELECTRICAL/OPTICAL CHARACTERISTICS AT TA=25°C

PARAMETER	SYMBOL	MIN.	TYP.	MAX.	UNITS	TEST CONDITION	GRADE
Luminous Intensity Per Segment	I _v	2501	3000	3500	μcd	I _F = 10mA	G
Luminous Intensity Per Segment	I _v	3501	4113	4725	μcd	I _F = 10mA	H
Luminous Intensity Per Segment	I _v	4726	5435	6144	μcd	I _F = 10mA	K
Peak Emission Wavelength	λ _p		570		nm	I _F = 20mA	
Spectral Line Half-Width	Δλ		30		nm	I _F = 20mA	
Forward Voltage Per Segment (Except Dp)	V _F	3.9	4.4	5.0	V	I _F = 20mA	
Reverse Current Per Segment	I _R			20	μA	V _R = 10V	
Luminous Intensity Matching Rate	I _v -m			1.5:1		I _F = 20mA	

Notes: Above specification may be changed without notice.