



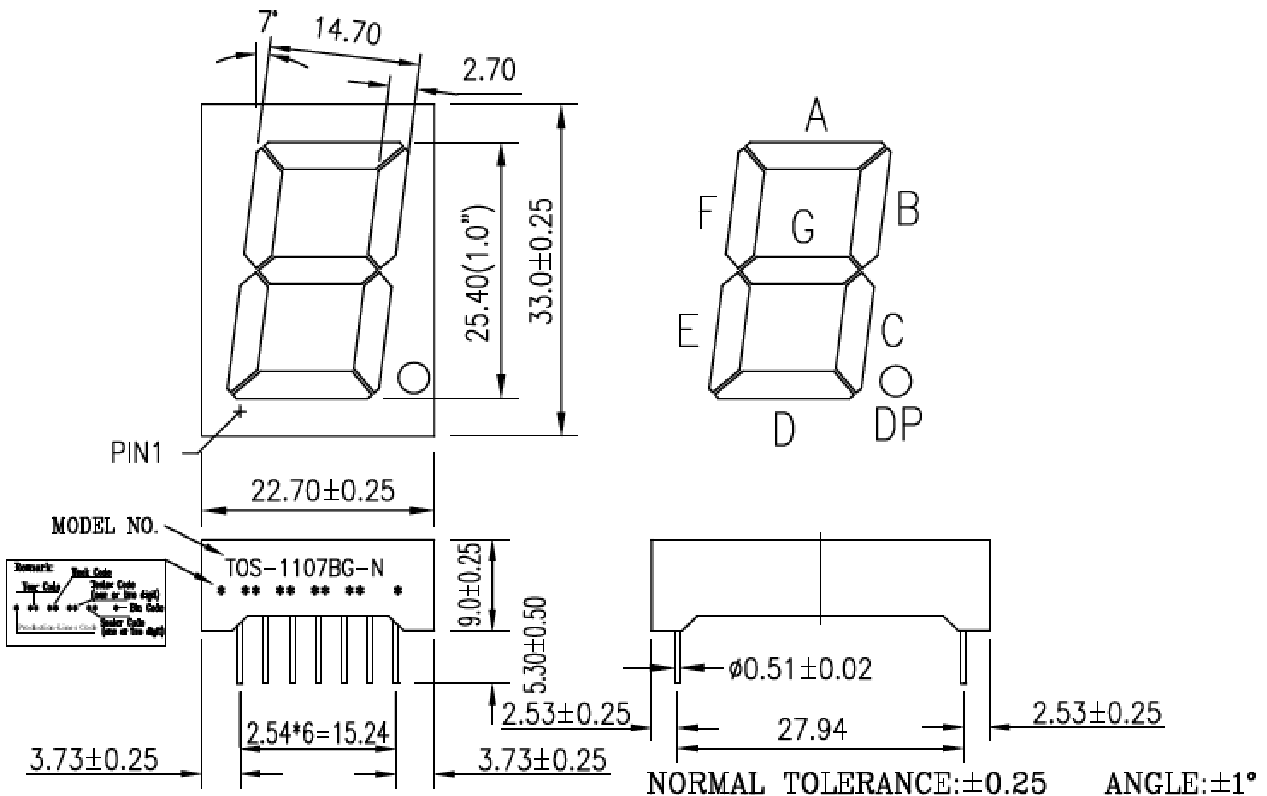
# KASHINOKI SOGYO CO., LTD

製品名

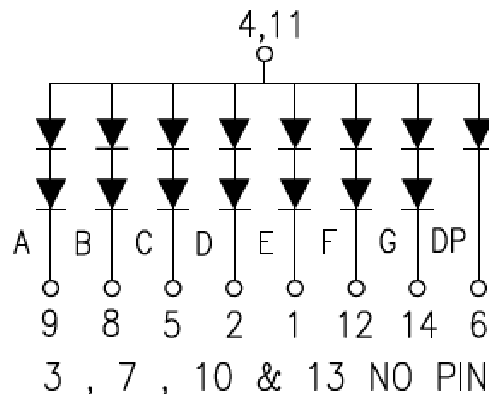
文字高25.4mm緑セグメント1107Gアノードコモン

APPEARANCE			TECHNOLOGY	GaP
FACE	SEGMENT	PIN	SOURCE COLOR	Green
			DRIVER MODE	Com. Anode
Gray	White	φ0.51x10.28	PACKING	"F" Plastic Box

## PACKAGE DIMENSIONS



## INTERNAL CIRCUIT DIAGRAM





# KASHINOKI SOGYO CO., LTD

製品名

文字高25.4mm緑セグメント1107Gアノードコモン

## ABSOLUTE MAXIMUM RATINGS AT TA=25°C

PARAMETER	VALUE	UNITS
Power Dissipation Per Segment (Except Dp)	120	mW
Peak Forward Current Per Segment (1/10 Duty Cycle, 0.1ms Pulse Width)	80	mA
Continuous Forward Current Per Segment	20	mA
Recommend Operating Current	12	mA
Reverse Voltage Per Segment (Except Dp)	10	V
Operating Temperature Range	-25 to +85	°C
Storage Temperature Range	-30 to +85	°C
Junction Temperature	+85	°C
Storage Time at 25±2°C / 65%RH±5%RH	6	Month
Lead Solder Temperature(1/16 Inch Below Seating Plane)	260°C for 3 sec.	

## ELECTRICAL/OPTICAL CHARACTERISTICS AT TA=25°C

PARAMETER	SYMBOL	MIN.	TYP.	MAX.	UNITS	TEST CONDITION	GRADE
Luminous Intensity Per Segment	I <sub>v</sub>	2501	3000	3500	μcd	I <sub>F</sub> =10mA	G
Luminous Intensity Per Segment	I <sub>v</sub>	3501	4113	4725	μcd	I <sub>F</sub> =10mA	H
Luminous Intensity Per Segment	I <sub>v</sub>	4726	5435	6144	μcd	I <sub>F</sub> =10mA	K
Peak Emission Wavelength	λ <sub>P</sub>		570		nm	I <sub>F</sub> =20mA	
Spectral Line Half-Width	Δλ		30		nm	I <sub>F</sub> =20mA	
Forward Voltage Per Segment (Except Dp)	V <sub>F</sub>	3.9	4.4	5.0	V	I <sub>F</sub> =20mA	
Reverse Current Per Segment	I <sub>R</sub>			20	μA	V <sub>R</sub> =10V	
Luminous Intensity Matching Rate	I <sub>v</sub> -m			1.5:1		I <sub>F</sub> =20mA	

Notes: Above specification may be changed without notice.